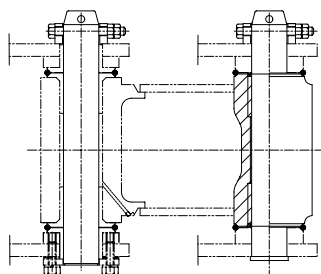
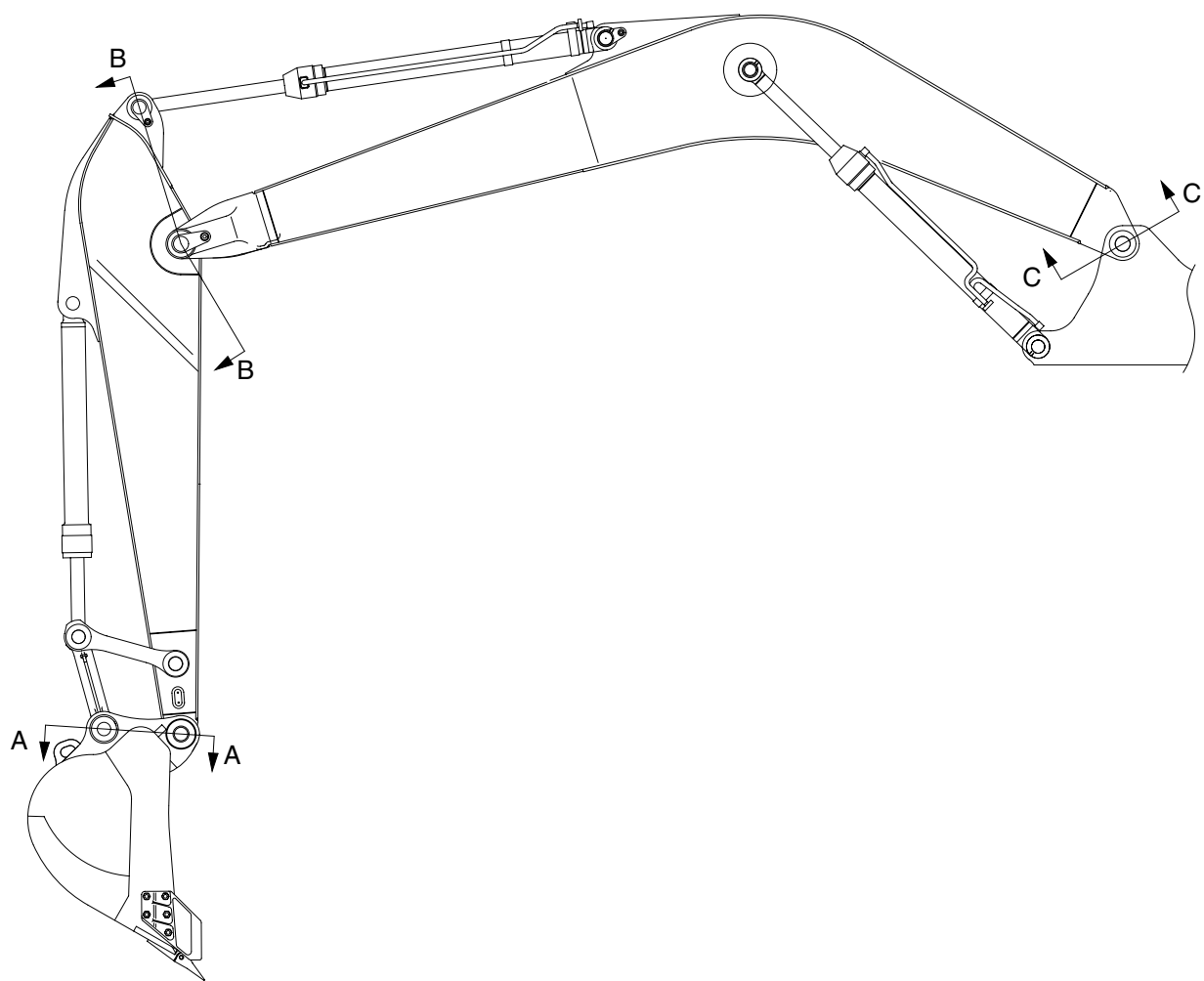
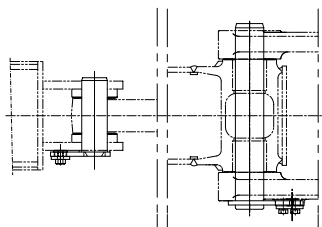


## GROUP 11 WORK EQUIPMENT

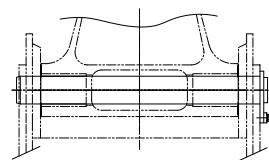
### 1. STRUCTURE



SECTION A



SECTION B



SECTION C

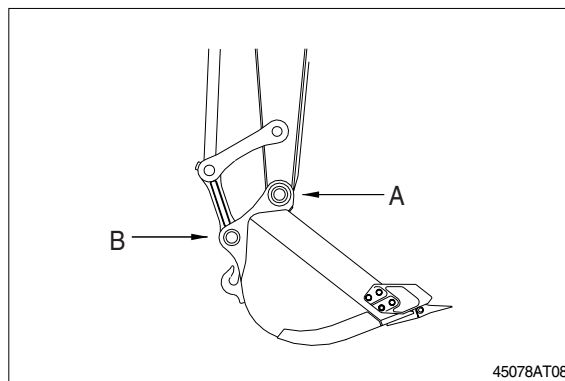
29078WE01

## 2. REMOVAL AND INSTALL

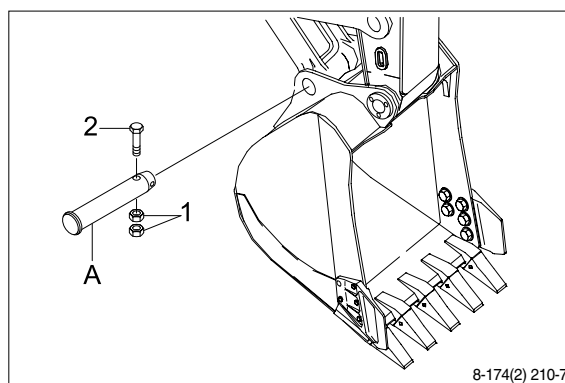
### 1) BUCKET ASSEMBLY

#### (1) Removal

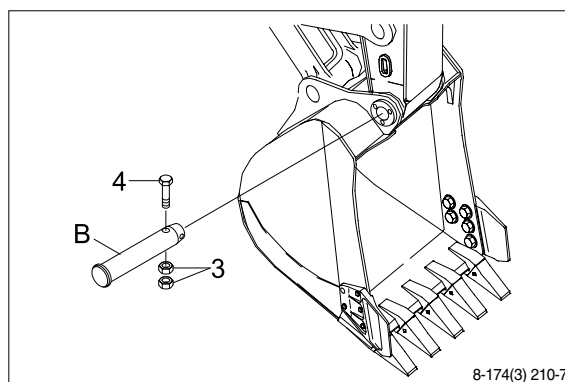
- ① Lower the work equipment completely to ground with back of bucket facing down.



- ② Remove nut(1), bolt(2) and draw out the pin(A).

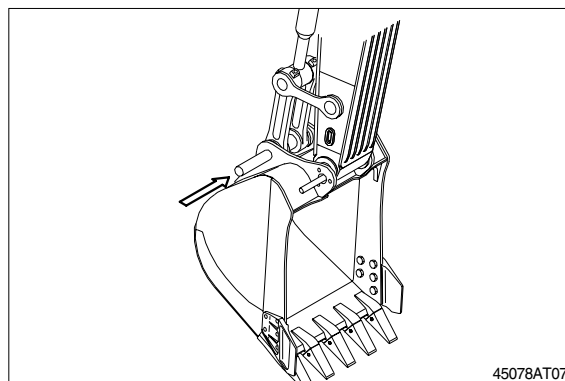


- ③ Remove nut(3), bolt(4) and draw out the pin(B).



#### (2) Install

- ① Carry out installation in the reverse order to removal.
- ▲ When aligning the mounting position of the pin, do not insert your fingers in the pin hole.
- ※ Adjust the bucket clearance.  
For detail, see **operation manual**.



## 2) ARM ASSEMBLY

### (1) Removal

- ※ Loosen the breather slowly to release the pressure inside the hydraulic tank.

**▲ Escaping fluid under pressure can penetrate the skin causing serious injury.**

- ① Remove bucket assembly.  
For details, see **removal of bucket assembly**.
- ② Disconnect bucket cylinder hose(1).

**▲ Fit blind plugs in the piping at the chassis end securely to prevent oil from spurting out when the engine is started.**

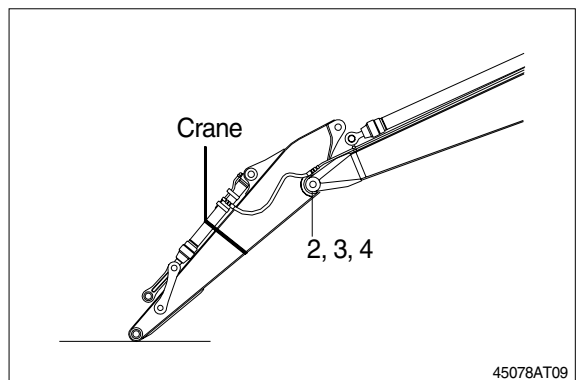
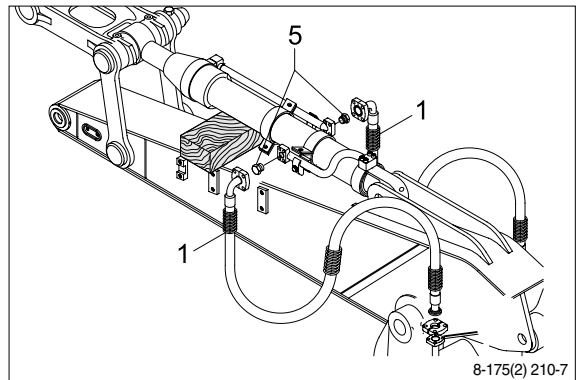
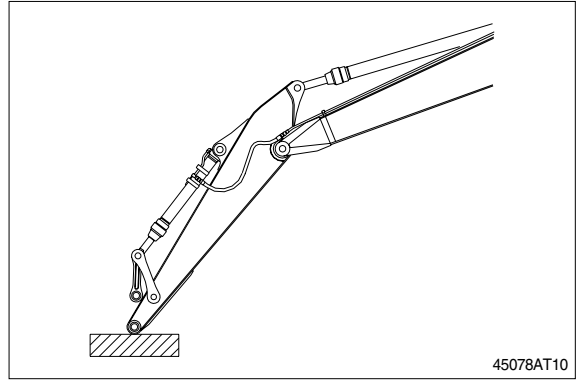
- ③ Sling arm cylinder assembly, remove spring, pin stopper and pull out pin.
- ※ Tie the rod with wire to prevent it from coming out.

- ④ For details, see **removal of arm cylinder assembly**.

Place a wooden block under the cylinder and bring the cylinder down to it.

- ⑤ Remove bolt(2), plate(3) and pull out the pin(4) then remove the arm assembly.
  - Weight : 1450kg(3200lb)

- ※ When lifting the arm assembly, always lift the center of gravity.



### (2) Install

- ① Carry out installation in the reverse order to removal.

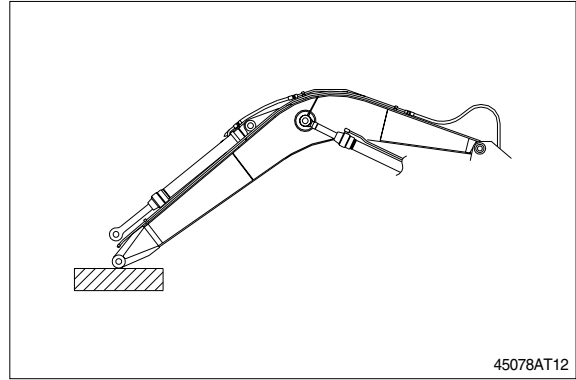
**▲ When lifting the arm assembly, always lift the center of gravity.**

- ※ Bleed the air from the cylinder.

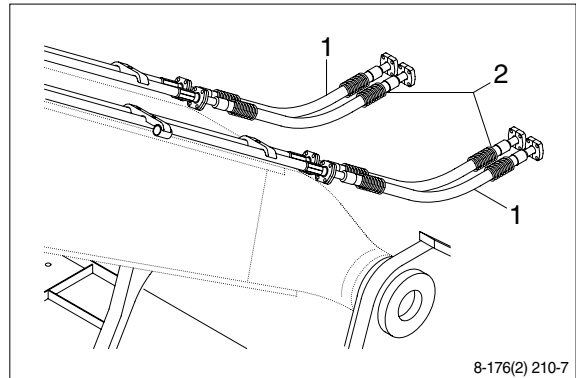
### 3) BOOM ASSEMBLY

#### (1) Removal

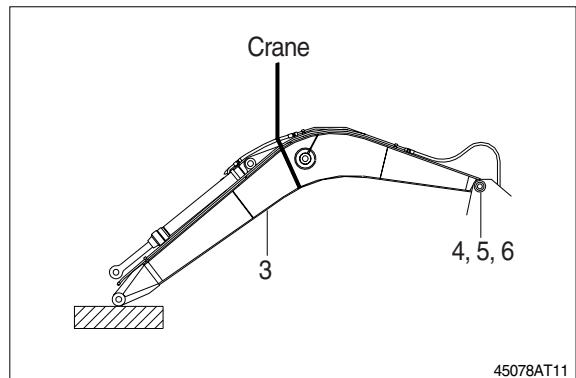
- ① Remove arm and bucket assembly.  
For details, see **removal of arm and bucket assembly**.
- ② Remove boom cylinder assembly from boom.  
For details, see **removal of boom cylinder assembly**.



- ③ Disconnect head lamp wiring.
- ④ Disconnect bucket cylinder hose(2) and arm cylinder hose(1).
- ※ When the hose are disconnected, oil may spurt out.
- ⑤ Sling boom assembly(3).



- ⑥ Remove bolt(4), plate(5) and pull out the pin(6) then remove boom assembly.  
· Weight : 3300kg(7360lb)
- ※ When lifting the boom assembly always lift the center of gravity.



#### (2) Install

- ① Carry out installation in the reverse order to removal.
- ▲ **When lifting the boom assembly, always lift the center of gravity.**
- ※ Bleed the air from the cylinder.

