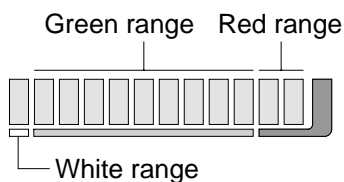
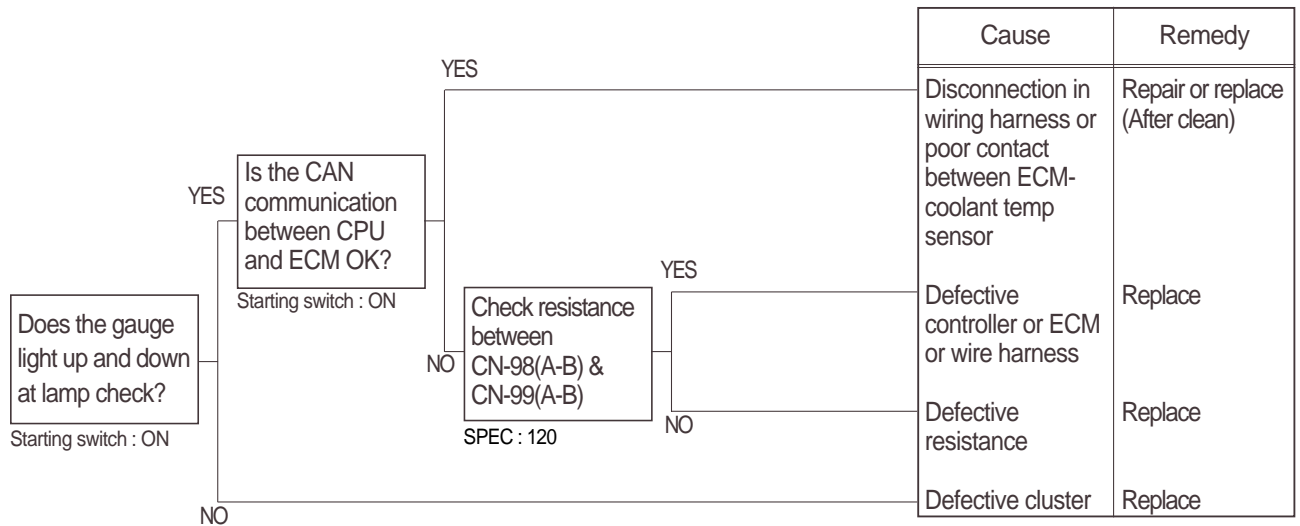


GROUP 5 ELECTRICAL SYSTEM (TIER II ONLY)

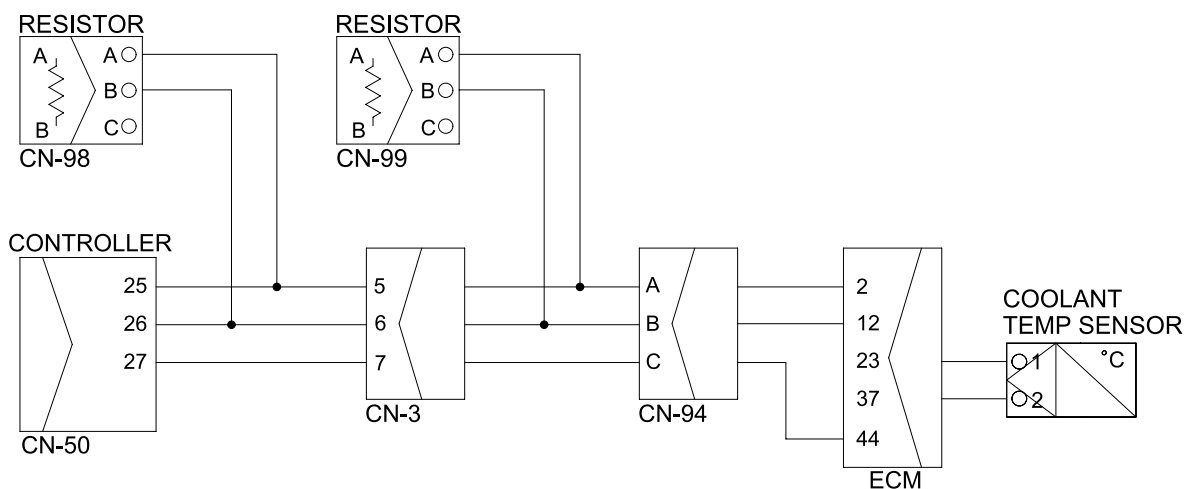
1. WHEN COOLANT OVERHEAT WARNING LAMP LIGHTS UP (Engine is started)

- Before disconnecting the connector, always turn the starting switch OFF.
- Before carrying out below procedure, check all the related connectors are properly inserted.
- After checking, insert the disconnected connectors again immediately unless otherwise specified.



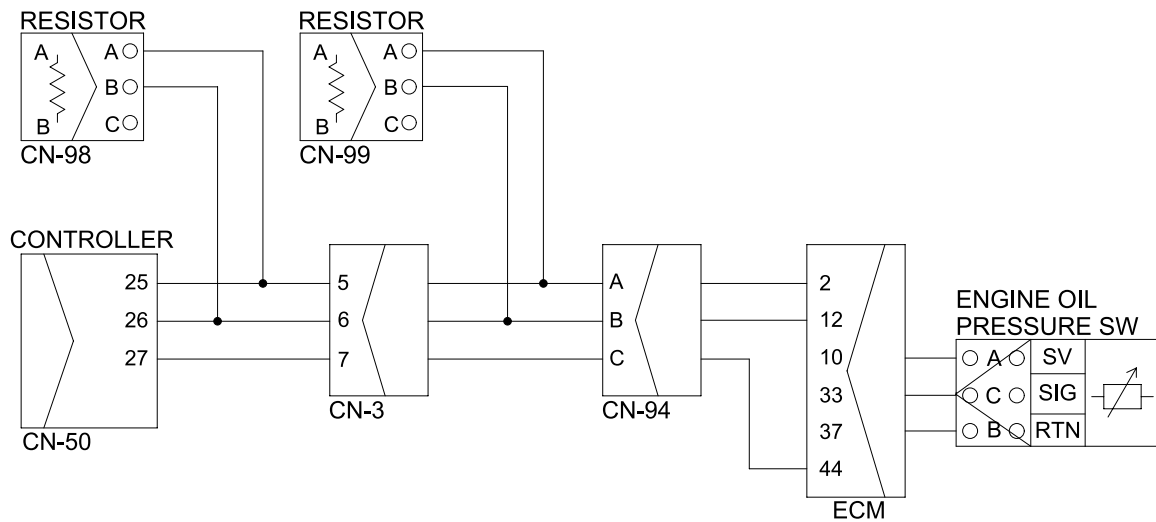
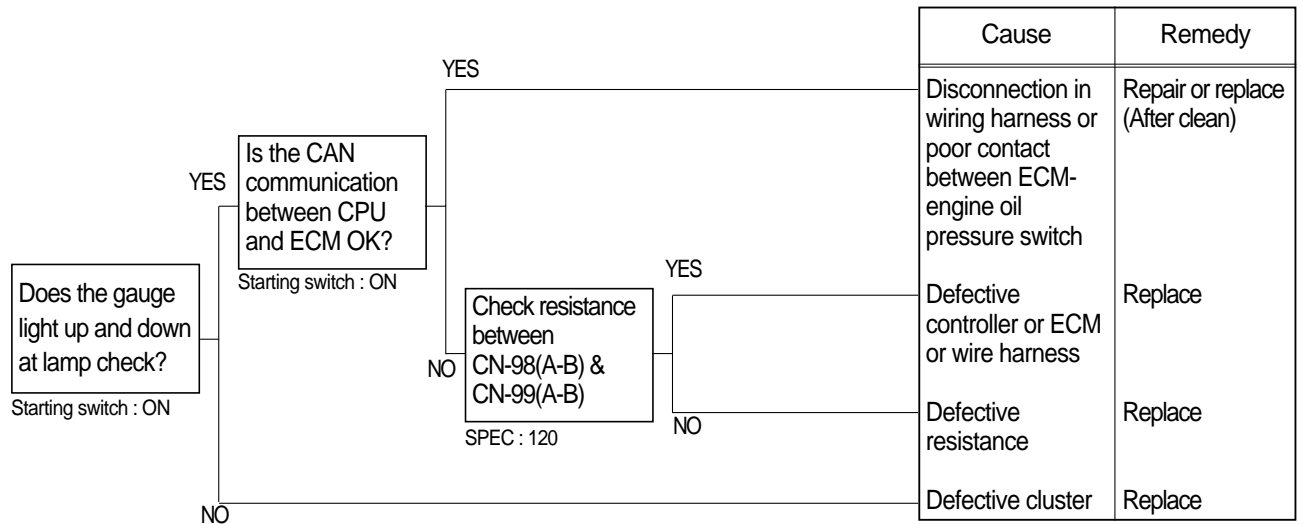
Check table

Temperature	White range (~29°C)	Green range (30~105°C)	Red range (105°C~)
-------------	--------------------------	-----------------------------	-------------------------



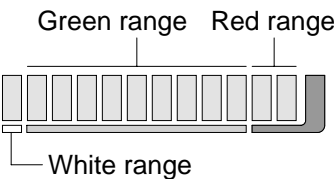
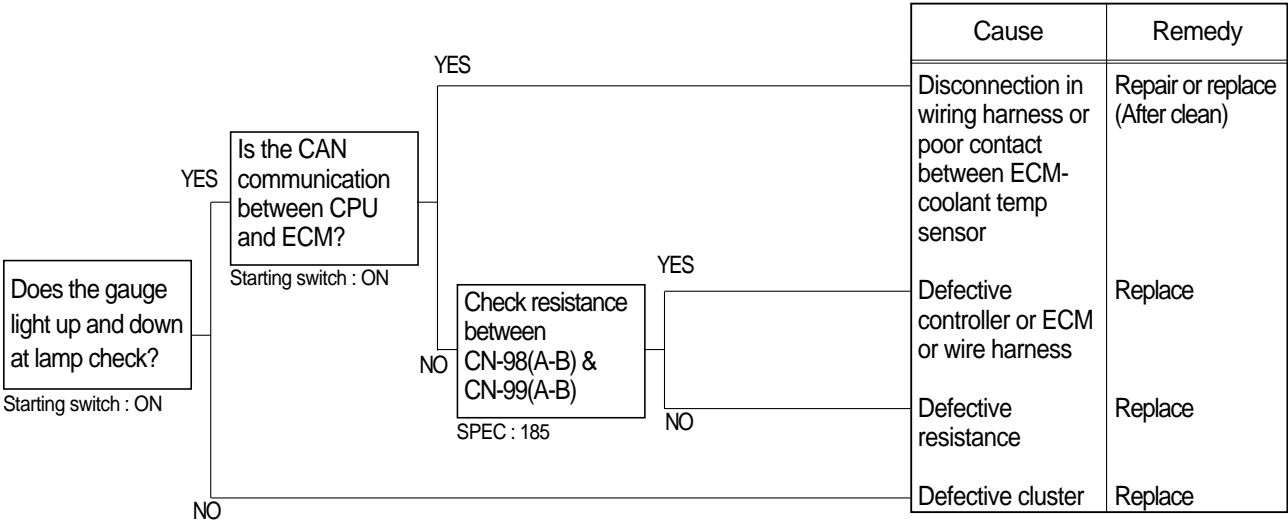
2. WHEN ENGINE OIL PRESSURE WARNING LAMP LIGHTS UP(Engine is started)

- Before disconnecting the connector, always turn the starting switch OFF.
- Before carrying out below procedure, check all the related connectors are properly inserted.
- After checking, insert the disconnected connectors again immediately unless otherwise specified.



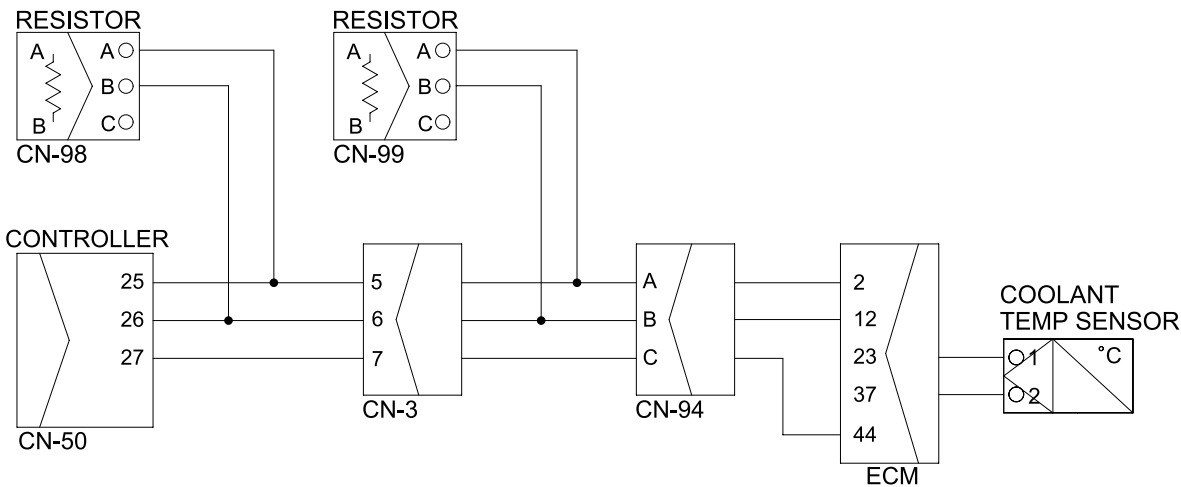
3. WHEN COOLANT TEMPERATURE GAUGE DOES NOT OPERATE)

- Before disconnecting the connector, always turn the starting switch OFF.
- Before carrying out below procedure, check all the related connectors are properly inserted.
- After checking, insert the disconnected connectors again immediately unless otherwise specified.



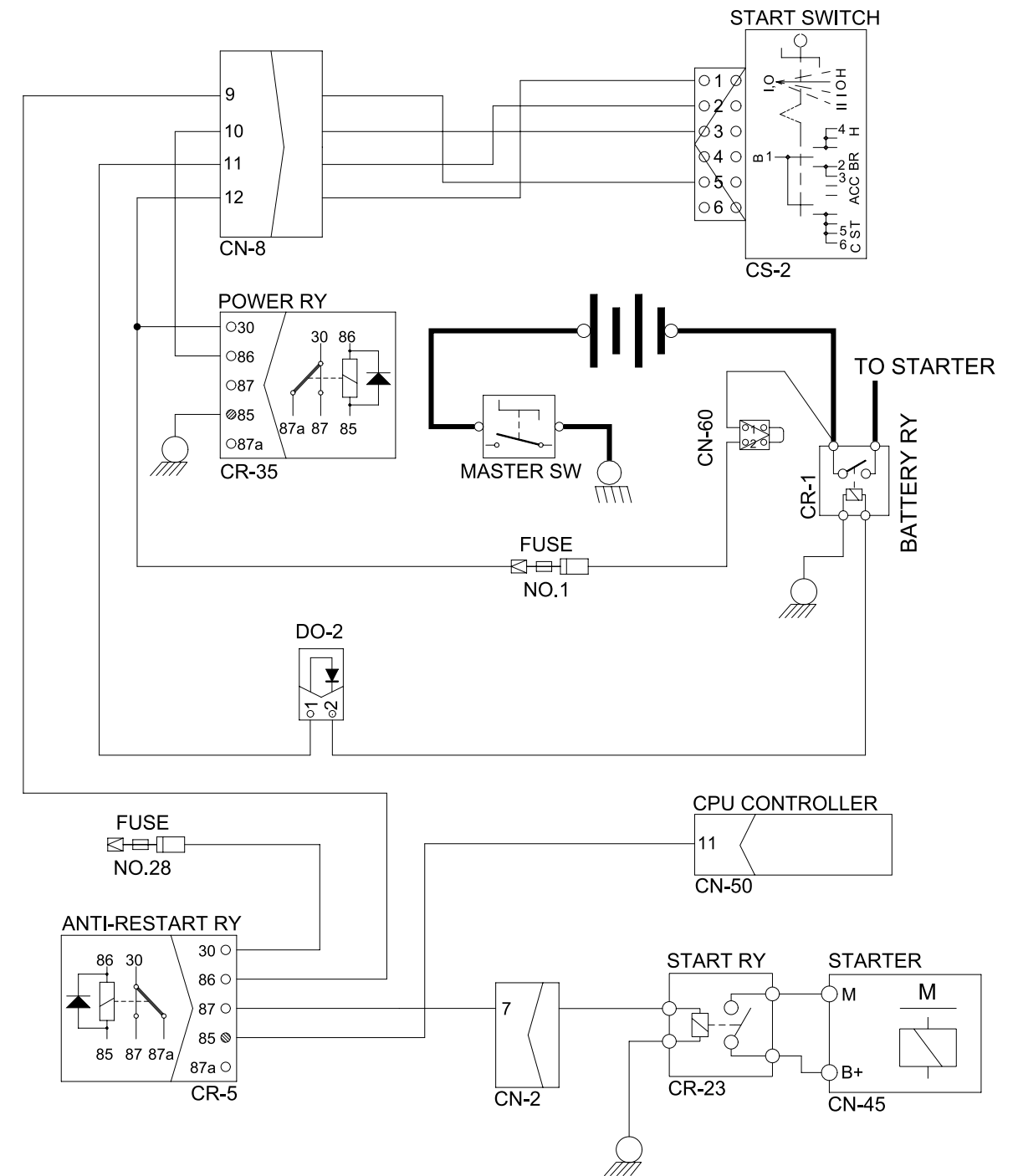
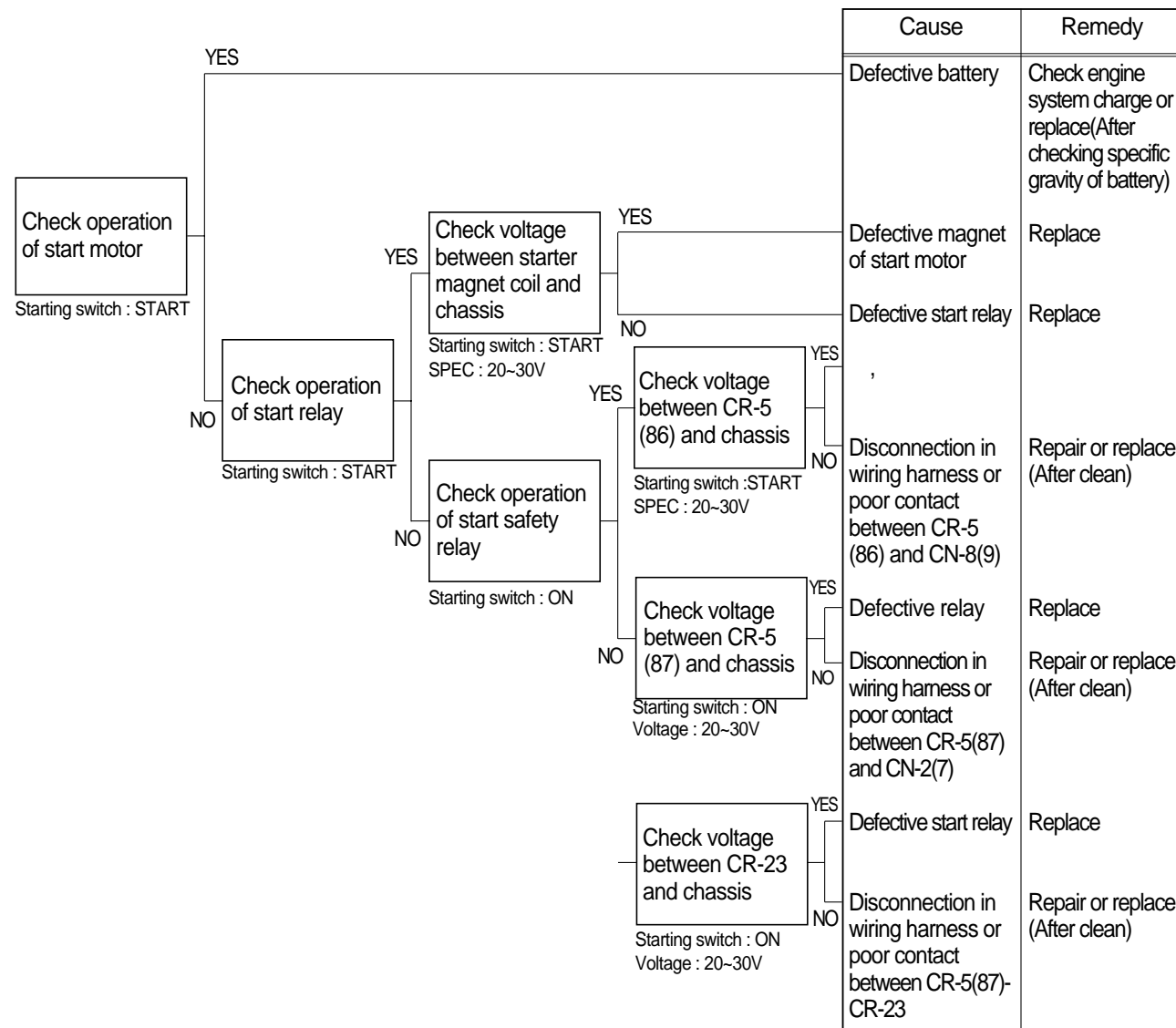
Check table

Temperature	White range (~29°C)	Green range (30~105°C)	Red range (105°C~)
-------------	--------------------------	-----------------------------	-------------------------



4. WHEN ENGINE DOES NOT START

- Check supply of the power at engine stop solenoid while starting switch is ON.
- Before disconnecting the connector, always turn the starting switch OFF.
- Before carrying out below procedure, check all the related connectors are properly inserted.
- After checking, insert the disconnected connectors again immediately unless otherwise specified.



5. WHEN STARTING SWITCH "ON" ELECTRIC PART DOES NOT OPERATE.

- Before disconnecting the connector, always turn the starting switch OFF.
- Before carrying out below procedure, check all the related connectors are properly inserted and master switch ON
- After checking, insert the disconnected connectors again immediately unless otherwise specified.

