

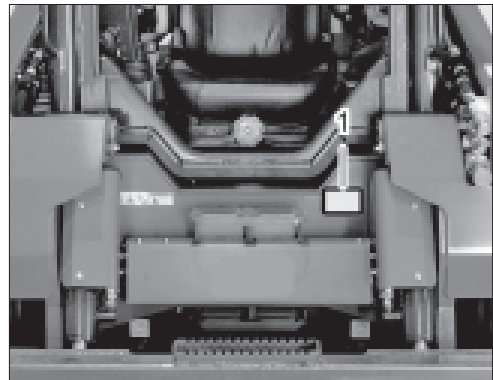
2. PRECAUTIONS

1. VEHICLE IDENTIFICATION NUMBER

1) PRODUCTION(MACHINE) SERIAL NUMBER

1 Production(machine) serial number

The production(machine) serial number is the number by which to identify a product, which is attached on the front of the machine.

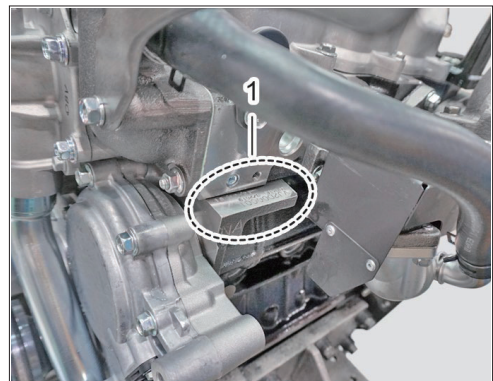


LF1O173A

2) ENGINE SERIAL NUMBER

1 Engine serial number

The engine serial number is engraved on the cylinder block behind the gear case.



LF1O201A

※ When in need of parts, be prepared to give your dealer both the machine and engine serial numbers.

Fill in the following fields so that the production and engine serial numbers can be provided immediately when service is needed:

• Machine serial number

• Engine serial number

• Date of Purchase

(To be filled in by purchaser)

2. ESSENTIAL REPLACEMENT PARTS

1) OILS AND FLUIDS

Various oils and fluids are used in this machine for operation, lubrication, cooling, and anti-corrosion of various parts.

If oil or fluid is insufficient, contaminated or degraded, it can cause poor performance, incorrect operation, and seized parts of the machine, leading to malfunction.

Regularly add or change the fluid specified on the right to keep the machine in good condition.



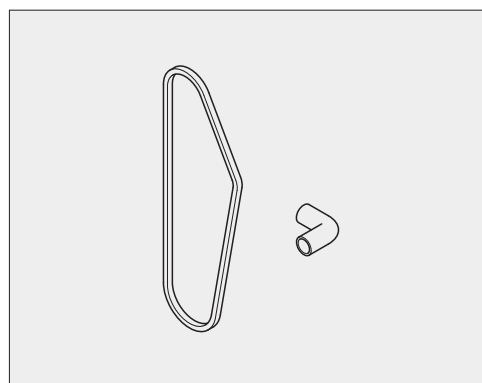
H11O204A

No.	Part name	Spec.	Capacity [ℓ (us gal)]
1	Engine oil (including the filter)	Spec: API CJ-4 grade or higher Viscosity (SAE): SAE 15W40	9.0 (2.4)
2	Hydraulic oil	ISO VG 46, HYUNDAI OIL	HS80V : 31 (8.2) HS120V : 38 (10.0)
3	Chain box (each on the left and right)	SAE 10W-30 or equivalent	13 (3.4)
4	Grease	SAE multi purpose type grease	As needed
5	Anti-freezer	Fresh clean water with ethylene glycol (50:50)	10.4 (2.75)

2) BELTS AND RUBBER PARTS

Belts, hoses and boots, which are made of rubber, get weakened and cracked as they age. If these parts are kept used in this state, they can be broken off, leading to a serious problem in the machine. Therefore, regularly check or replace those items to prevent the failure.

No.	Part name	Qty
1	Fan belt	1

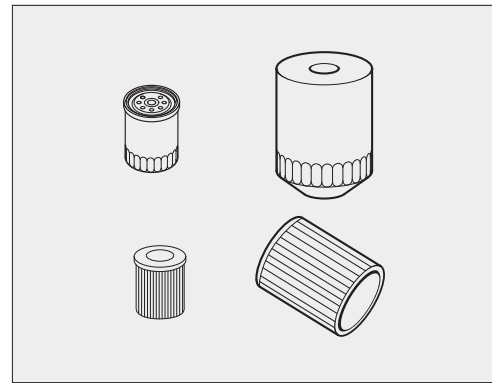


H11O206A

3) FILTERS

Filters for the engine, transmission, air cleaner, and A/C are consumables that purify oil and air. Make sure to replace these items when changing oil.

No.	Part name	Quantity
1	Hydraulic filter element - HST	1
2	Hydraulic filter element - Return	1
3	Intake air filter	1
4	Fuel filter	1
5	Oil filter	1
6	Element	1

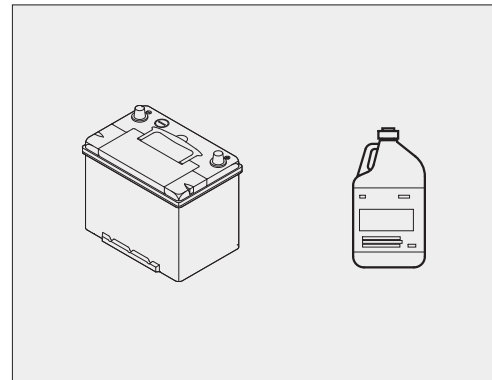


H11O205A-1

4) OTHER COMPONENTS

The battery condition is very important for engine start performance especially in winter. Therefore, make sure to check its condition daily to prevent its discharge. Also, check its service life and electrolyte condition regularly.

No.	Part name	Quantity
1	Battery (110AH)	1



H11O207A