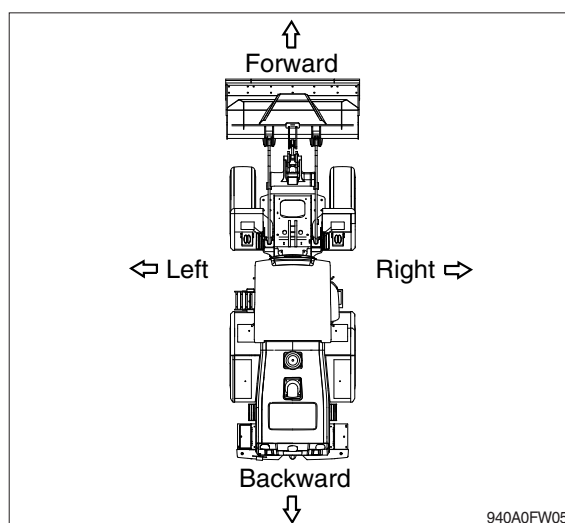


GUIDE

1. DIRECTION

The direction of this manual indicates forward, backward, right, and left when the machine is in the traveling direction.

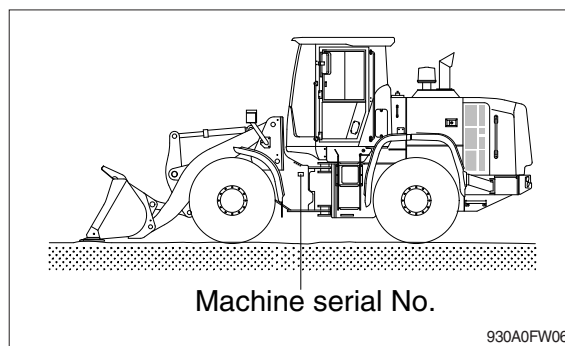


2. SERIAL NUMBER

Inform following when you order parts or the machine is out of order.

1) MACHINE SERIAL NUMBER

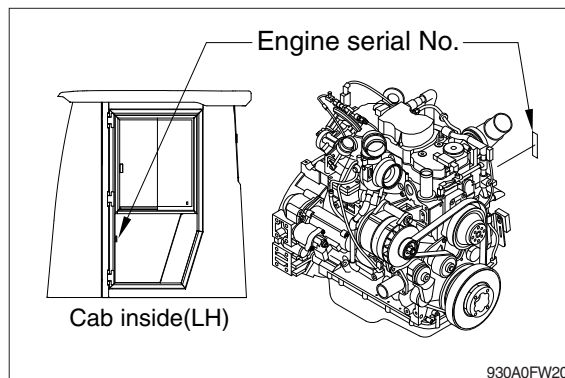
The numbers are located on the left side of the front frame.



2) ENGINE SERIAL NUMBER

The numbers are located on the engine nameplate.

It is also located on the left side frame of the cab inside.



3. INTENDED USE

This machine is designed to be used mainly for the following work.

- Excavating work
- Leveling work
- Loading work
- Transporting work

※ Please refer to the section 4 (efficient working method) further details.

4. SYMBOLS

▲ This Danger label indicates a high level of risk. Neglecting the warning may result in serious injury or death.

△ This Warning label indicates a medium level of risk. Neglecting the warning may result in serious injury or death.

※ This label indicate useful information for the operator.